

BEE CAVE BUSINESS WELCOME PACKET

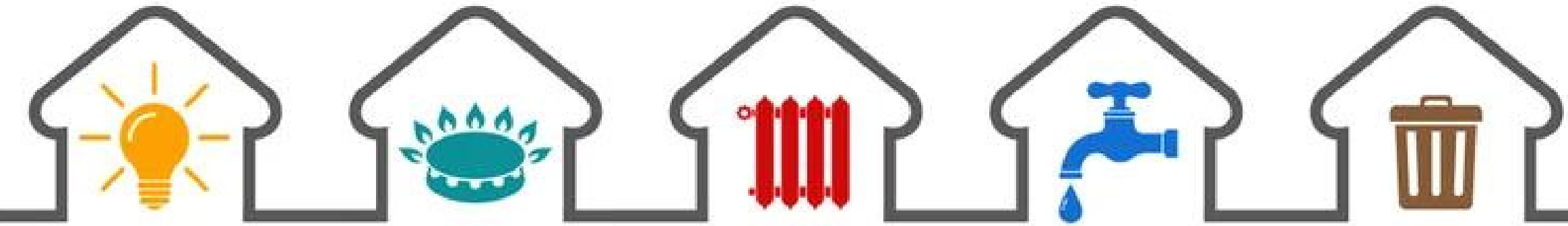


WELCOME TO THE CITY OF BEE CAVE

We are excited to have your business join our community and contribute to our vibrant culture and economy. This welcome packet is designed to provide you with important information about our city, including resources and contacts that will be valuable as you establish your business here.

All of the underlined words in this packet are live links that will direct you to websites if you click on them.





City of Bee Cave Utilities

Area Service Providers

Please contact your landlord for your location's most accurate information.

<u>Austin Energy</u>	800-344-8377
<u>Austin Health (food service permitting)</u>	512-978-0300
<u>Texas Gas Service</u>	800-700-2443
<u>Travis County Animal Control</u>	512-972-6060
<u>Travis County Tax Assessor</u>	512-854-9473
<u>TxDOT</u>	512-832-7012
<u>West Travis County Public Utility Agency (water/wastewater)</u>	512-246-0498
<u>WCID No. 17</u>	512-266-1111

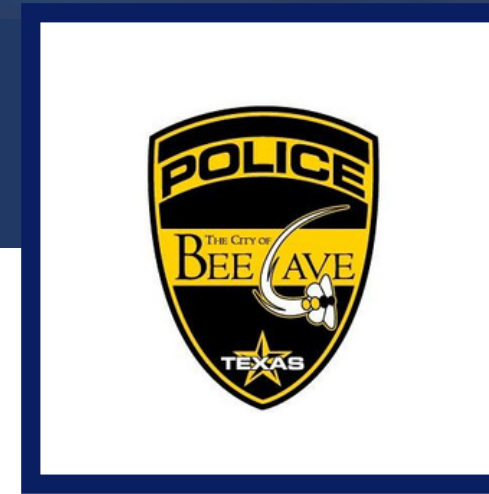


Business CONTACTS AND EMERGENCY

Business Contacts

<u>Bee Cave Chamber of Commerce</u>	512-256-4004
<u>Lake Travis Chamber of Commerce</u>	512-387-3180
<u>Lake Travis Independent School District</u>	512-533-6000
<u>Bee Cave Library</u>	512-767-6620

[View the LTISD Calendar HERE](#)



Emergency Services - 911

<u>Bee Cave Police</u> , non-emergency line	512-767-6650
	#2 for dispatch
<u>Lake Travis Fire and Rescue</u>	512 266-2533

Call 911 when you need an immediate police response. Things that are more of a nuisance or otherwise do not need immediate police response, please call the non emergency line.

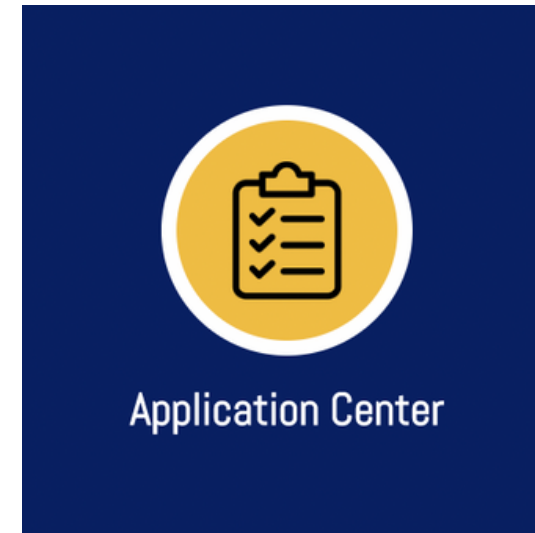


Who do I contact about my new business?

This would be the Planning and Development Department.

If you are looking to develop/redevelop a site for a business, please start with our City Planners. If you are moving into an existing space, start with the Deputy Building Official.

Click on [THIS LINK](#) to find the contact you need.



Do I need a certificate of occupancy?

All new businesses, even those occupying an existing space without any remodeling/building modifications requiring a permit, must obtain a Certificate of Occupancy. A Certificate of Occupancy checklist may be found on the City's website. CO applications are accepted on the City's online permitting portal.

FAQ's to the City

Where can I find building permits and inspection information?

You can find it on our website.

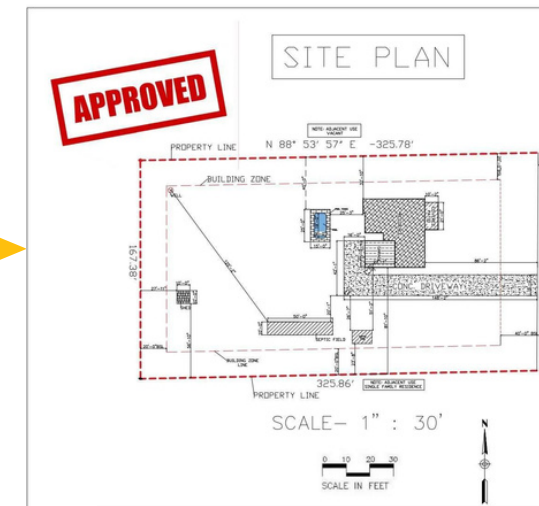
Please click on [THIS LINK](#) to navigate your needs.



FAQ's to the City

How do I apply for a site plan permit within city limits?

In the Application Center click on the Engineering and Site Development Docs and then select the Site and NPS application appropriate for your needs.



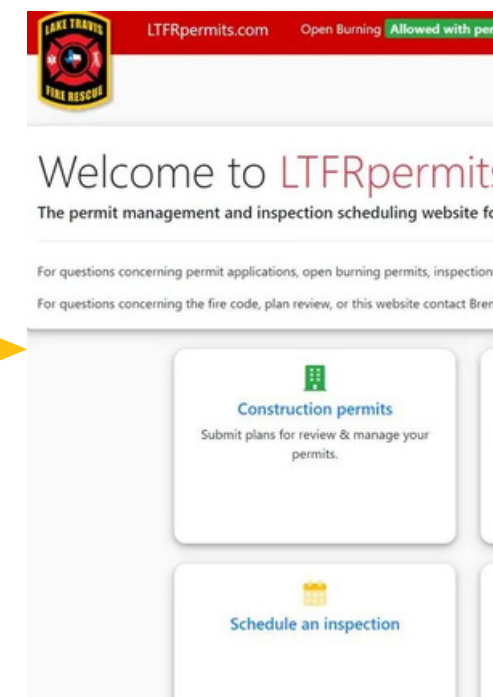
When do I need a permit?

Please visit THIS LINK to see a complete list.



How do I schedule a fire inspection?

Please visit the Lake Travis Fire and Rescue Permit WEBSITE to schedule your inspection and contact them.



How do I apply for a Special Event Permit?

Use THIS LINK to get to the application center. Scroll down to review the special event application checklist and to access the online application portal.



FAQ's to the City

Staffing

I lack adequate staffing for my business.
Can the city assist me?
Click [THIS LINK](#) to see upcoming job fairs.



Lighting

Refer to our [BROCHURE HERE](#) about city lighting regulations.

Signage Questions?

Please note that each development within the city is connected to its own comprehensive sign package.

To get the most accurate responses about the sign agreements at your development, please take the following steps:

- Request the agreement from your landlord
- Get your new address
- With the above information contact Mike Polley at: MPolley@beecavetexas.gov



READ OUR CITY CODE



View the City of Bee Cave's
[Unified Development Code HERE.](#)





Ongoing efforts for our businesses

[Quarterly Business Roundtables](#)

[Job Fairs](#)

[Monthly Economic Development Board Meetings](#)

Official City websites

beecavetexas.gov

edc.beecavetexas.gov

library.beecavetexas.gov

To get on the business email list and stay up-to-date on city events, news, and more, please email the Business Communications Specialist: dkelley@beecavetexas.gov





501 (c) (3)s in Bee Cave

Economic Development Council

Bee Cave Arts Foundation

Friends of the Library

Friends of the Park



City of Bee Cave Certifications

Bee City USA

This designation is only given to cities that actively work to protect native bee populations and educate the community about these vital insects on a regular basis.



DarkSky Community

The DarkSky Association has created the International Dark Sky Communities certification process to recognize community efforts to preserve and protect the night sky from light pollution.



Platinum Scenic City

The mission of the Scenic City Certification Program is to support and recognize Texas municipalities that implement high-quality scenic standards for public spaces.



Our mission is to preserve and enhance the quality of life of citizens with a commitment to the highest standards in public and private services. We offer a healthy balance of retail and office business with great residential neighborhoods and an abundance of outdoor recreation. We strive to be unique with a balanced and progressive vision for future development and growth, in an inclusive and environmentally responsible manner. We embrace our Hill Country heritage trading and living with small-town values in an urban sub-rural setting.

